

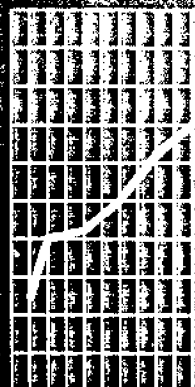


December 1996

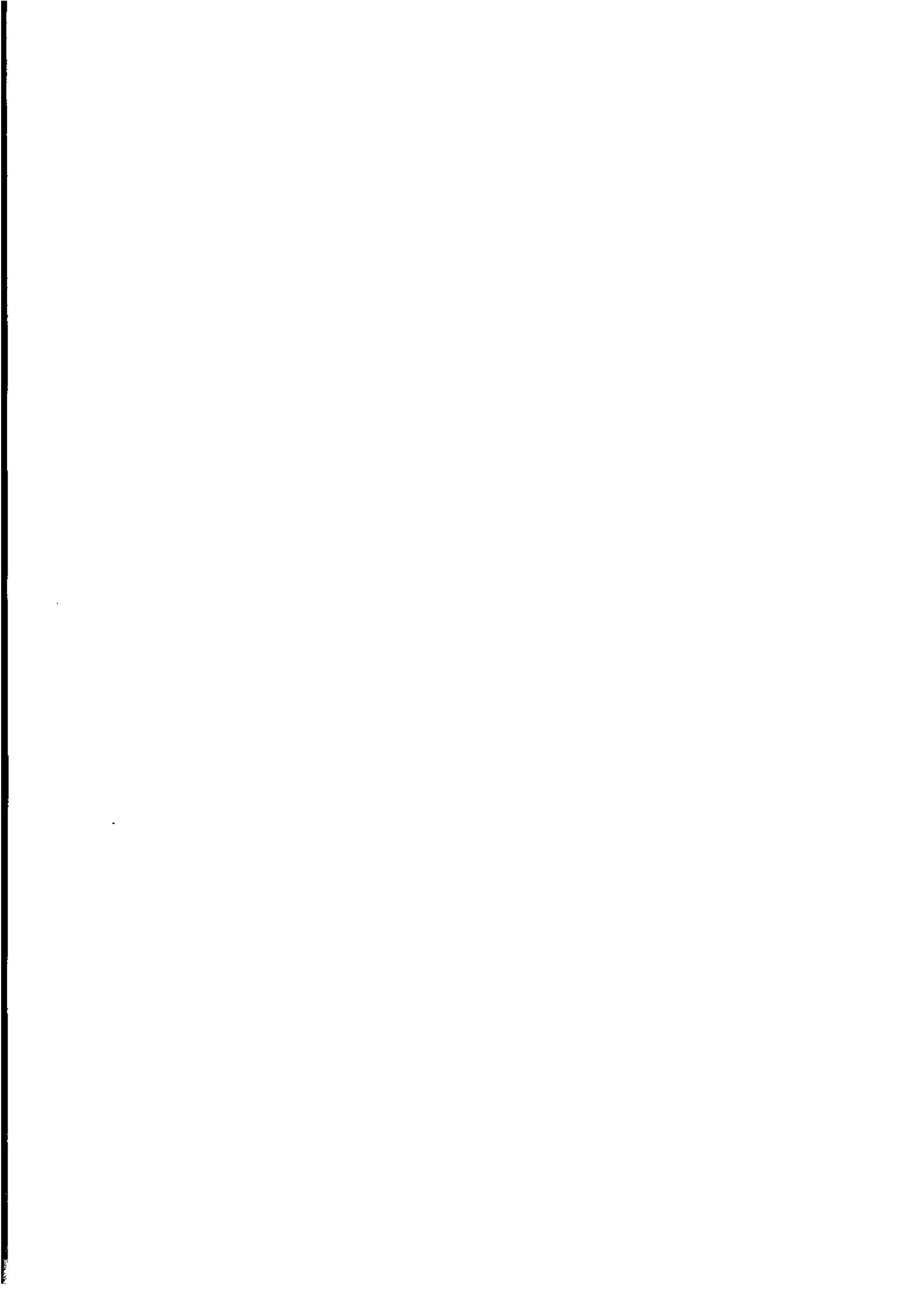
EMBARGO: 11.30AM (CANBERRA TIME) TUE 31 DEC 1996

Monthly Summary of Statistics

Western Australia



Statistics



CONTENTS

Table

Page

POPULATION	1.1	Estimated Resident Population	1
	1.2	Components of Population Change	2
	1.3	Registrations of Births, Deaths, Marriages and Divorces	3
	1.4	Rates of Birth, Deaths, Marriages and Divorces	3
TOURISM	2.1	Overseas Arrivals and Departures by Month	4
	2.2	Short Term Overseas Visitor Arrivals from Selected Countries	5
	2.3	Short Term Overseas Visitor Arrivals by Air: Purpose of Journey: Holiday	6
	2.4	Short Term Overseas Resident Departures to Selected Destinations	7
	2.5	Short Term Overseas Resident Departures by air: Purpose of Journey: Holiday	8
	2.6	Tourist Accommodation	9
EMPLOYMENT	3.1	Labour Force Status: Seasonally Adjusted	10
	3.2	Labour Force Status: Trends	11
	3.3	Employed Wage and Salary Earners by Industry and Sector	12
	3.4	Average Weekly Earnings of Employees	13
	3.5	Industrial Disputes Causing Stoppage of Work	14
RETAIL	4.1	Monthly Retail Turnover: Original Estimates	15
	4.2	Consumer Price Index: Perth	16
CONSTRUCTION	5.1	New Residential Building Approved	17
	5.2	New Non-Residential Building Approved	18
	5.3	Selected Housing Price Indexes: Perth	19
	5.4	Price Indexes of Materials Used in Building Other Than House Building: Perth	20
PRODUCTION	6.1	Livestock Slaughtered	21
	6.2	Meat Produced	21
	6.3	Wool Receipts	22
	6.4	Energy Production	22
	6.5	Mineral Exploration: Expenditure by Type of Mineral Sought	23
	6.6	Mineral Production	23
OVERSEAS TRADE	7.1	Imports by Selected Divisions	24
	7.2	Exports by Selected Divisions	25
TRANSPORT	8.1	New Motor Vehicle Registrations	26
	8.2	Vehicle Registration Statistics	26
FINANCE	9.1	Private New Capital Expenditure by Selected Industry Groups	27
	9.2	State Final Demand and Production Account	27
STATISTICAL SUMMARY	10.1	Key State Indicators	28

INQUIRIES

- PHONE ■ For more information about these statistics and of related unpublished statistics, contact Information Services on (09) 360 5140
- MAIL ■ Write to or visit Information Services, Bureau of Statistics,
Level 16, Exchange Plaza Building, 2 The Esplanade, Perth WA 6000
- ELECTRONIC ■ On Elderlink key *620#
■ On Dial-A-Statistic phone 0055 86 400
-

**AUSTRALIAN BUREAU OF STATISTICS
WESTERN AUSTRALIA
DECEMBER 1996 RELEASES**

<i>Catalogue Number</i>	<i>Publication Title</i>	<i>Release Date</i>
8731.5	Building Approvals, Western Australia, October 1996	06 December 1996
8705.5	Estimated Stocks of Dwellings, Western Australia, 1996	12 December 1996
8635.5	Tourist Accomodation , Western Australia, September 1996	18 December 1996
1305.5	Monthly Summary of Statistics, Western Australia, December 1996	31 December 1996

**SYMBOLS AND OTHER
USAGES**

The following symbols, where shown in columns of figures or elsewhere in tables, mean:

- n.a. not available
- n.e.i. not elsewhere included
- n.p. not available for separate publication (but included in totals where applicable)
- n.y.a. not yet available
- nil or rounded to zero
- .. not applicable
- * Subject to sampling variability too high for most practical purposes.
- p preliminary - figure or series subject to revision
- r figure or series revised since previous issue
- break in continuity of series (where drawn between two consecutive figures or columns)

ROUNDING FIGURES

Where figures have been rounded, discrepancies may occur between sums of the component items and totals.

**P.C.Kelly
Regional Director, Western Australia**

Analysis of Table 1.1

The estimated resident population of Western Australia at 30 June 1996 was 1,762,700, an increase of 7,200 in the June quarter and 31,600 since 30 June 1995. The growth rate during the twelve months to 30 June 1996 was 1.82 % compared to a growth rate of 1.77 % for the preceding twelve month period.

1.1 ESTIMATED RESIDENT POPULATION

Period	At end of period			Mean Population
	Males	Females	Persons ¹	
	'000			
Financial years				
1993-94	854.6	846.4	1 701.1	1 688.5
1994-95	869.5	861.6	1 731.2	1 716.1
1995-96 p	884.9	877.9	1 762.7	1 747.2
Calendar years				
1993	847.9	839.5	1 687.4	1 677.1
1994	861.1	853.2	1 714.3	1 702.0
1995p	876.9	869.5	1 746.4	1 731.2
Quarters				
Mar 95	865.7	857.7	1 723.4	..
Jun 95	869.5	861.6	1 731.2	..
Sep 95 p	873.7	865.8	1 739.5	..
Dec 95 p	876.9	869.5	1 746.4	..
Mar 96 p	881.3	874.3	1 755.5	..
Jun 96 p	884.9	877.9	1 762.7	..

¹ All estimates have been finalised using 1991 Census results
Reference: Australian Demographic Statistics (3101.0)

Analysis of Table 1.2

In the twelve months to 30 June 1996 the population increased by 31,600 compared to an increase of 30,100 in the previous twelve months. The natural increase dropped slightly from 14,700 in 1994-95 to 14,200 in 1995-96. This was more than offset by a significant increase in the level of net estimated overseas migration up from 10,500 in 1994-95 to 13,500 in 1995-96. This component has increased each year from a low of 4,600 in 1992-93.

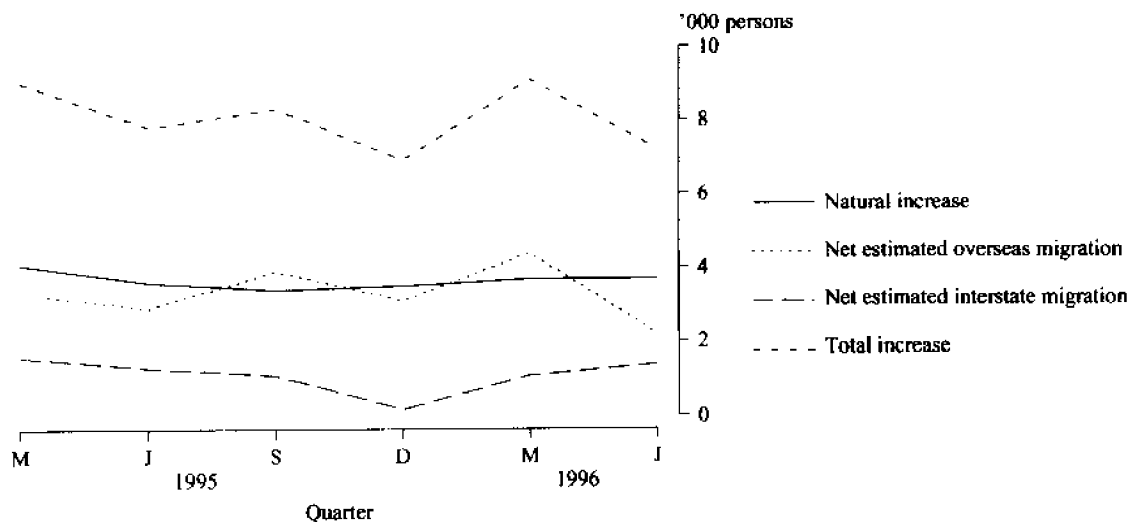
1.2 COMPONENTS OF POPULATION CHANGE

Period	Natural increase	Net estimated overseas migration ¹	Net estimated interstate migration	Total increase
		(000)		
Financial years				
1993-94	14.3	6.7	3.7	24.7
1994-95	14.7	10.5	4.9	30.1
1995-96 p	14.2	13.5	3.8	31.6
Calendar years				
1993	14.5	5.6	0.6	20.7
1994	14.5	8.0	4.5	26.9
1995 p	14.6	13.2	4.3	32.0
Quarters				
Mar 95	4.1	3.3	1.6	9.0
Jun 95	3.6	2.9	1.3	7.8
Sep 95 p	3.4	3.9	1.1	8.3
Dec 95 p	3.5	3.1	0.2	6.9
Mar 96 p	3.7	4.4	1.1	9.1
Jun 96 p	3.7	2.2	1.4	7.2

¹ includes an adjustment for 'category jumping'

Reference: Australian Demographic Statistics (3101.0)

COMPONENTS OF POPULATION CHANGE
WESTERN AUSTRALIA



Analysis of Table 1.3

The number of infant deaths in March quarter 1996 was the highest recorded in the last six quarters.

The number of live births dropped by 184 from March quarter 1995 whilst deaths increased by 274.

Marriages fell by 312 compared to a year ago but the number of divorces rose by 150.

1.3 REGISTRATION OF BIRTHS, DEATHS, MARRIAGES AND DIVORCES

Period	Live births	Infant deaths	Total deaths	Marriages	Divorces
Financial years					
1992-93	25 080	147	9 998	10 214	4 385
1993-94	25 309	148	10 522	10 316	4 934
1994-95	25 022	137	10 261	10 381	4 930
Calendar years					
1993	25 079	143	10 318	10 382	4 654
1994	25 124	137	10 295	10 366	5 024
1995	25 122	128	10 361	10 404	5 040
Quarters					
Dec 94	6 000	29	2 537	3 305	1 358
Mar 95	6 417	38	2 314	3 247	1 081
Jun 95	6 348	32	2 598	2 367	1 158
Sep 95	6 311	30	2 917	1 524	1 332
Dec 95	6 046	28	2 532	3 266	1 469
Mar 96 p	6 233	54	2 588	2 935	1 231

Reference: Australian Demographic Statistics (3101.0)

Analysis of Table 1.4

The rate for infant deaths in March quarter 1996 was the highest recorded in the last six quarters, reflecting the increase in numbers.

The births and deaths rates rose slightly in March quarter 1996 compared to December quarter 1995.

Both divorce and marriage rates for March quarter 1996 fell from the preceding quarter as they did twelve months ago.

For more information regarding tables on Vital Statistics and Overseas Arrivals and Departures, please contact Mike Joske on (09) 360 5276.

1.4 RATES OF BIRTHS, DEATHS, MARRIAGES AND DIVORCES

Period	Live births ¹	Infant deaths ²	Total deaths ¹	Marriages ¹	Divorces ¹
Financial years					
1992-93	15.04	5.86	6.00	6.13	2.63
1993-94	14.99	5.85	6.23	6.11	2.92
1994-95 p	14.58	5.48	5.98	6.05	2.87
Calendar years					
1993	14.95	5.70	6.15	6.19	2.78
1994	14.76	5.45	6.05	6.09	2.95
1995 p	14.51	5.10	5.98	6.01	2.91
Quarters					
Dec 94	14.02	4.83	5.93	7.72	3.17
Mar 95	14.93	5.92	5.38	7.56	2.52
Jun 95	14.70	5.04	6.02	5.48	2.68
Sep 95	14.55	4.75	6.72	3.51	3.07
Dec 95	13.88	4.63	5.81	7.50	3.37
Mar 96 p	14.24	8.66	5.91	6.70	2.81

¹ For financial and calendar years the rate is per '000 mean resident population. For quarters, the mean is averaged between the previous and current quarterly population.

² Infant deaths per 1,000 live births.

Reference: Australian Demographic Statistics (3101.0)

Analysis of Table 2.1

Total arrivals in September 1996 were up by 2% from the previous month and by 12% from September 1995.

Short-term arrivals of overseas visitors and Australian residents increased from September 1995 by 12% and 13% respectively.

Long-term overseas visitors were up by 15% and Australian residents returning were down by 6% from September 1995.

Total departures in September 1996 rose by 5% from the previous month and were 14% higher than in September 1995.

Short-term departures of residents going overseas rose by 7,540 persons or 27% from August 1996 and by 5,850 persons or 20% on September 1995.

Short-term departures of overseas visitors rose by 8% from September 1995 but fell by 16% from August 1996.

For more information regarding Overseas Arrivals and Departures please contact Mike Joske on (09) 360 5276.

2.1 OVERSEAS ARRIVALS AND DEPARTURES BY MONTH

Period	SHORT-TERM ARRIVALS			LONG-TERM ARRIVALS		Total Arrivals
	Permanent Arrivals	Australian residents	Overseas visitors	Australian residents	Overseas visitors	
ARRIVALS						
Financial Years						
1993-94	7 740	269 890	297 750	8 900	7 430	591 700
1994-95	10 380	289 250	339 690	9 070	8 470	656 850
1995-96	11 320	308 110	361 180	8 600	10 170	699 380
Months						
Jul 95	970	29 140	24 480	680	1 720	56 960
Aug 95	960	26 650	24 840	620	450	53 520
Sep 95	890	27 730	24 620	680	470	54 400
Oct 95	1 070	35 360	30 330	700	570	68 020
Nov 95	1 020	22 700	33 660	820	370	58 560
Dec 95	1 040	18 450	46 800	1 260	510	68 070
Jan 96	1 150	36 460	24 250	840	1 460	65 170
Feb 96	940	20 650	39 640	630	2 530	64 380
Mar 96	900	20 660	31 010	670	560	53 810
Apr 96	860	23 670	32 270	580	660	58 020
May 96	680	20 100	22 550	500	380	44 210
Jun 96	860	25 530	26 720	630	500	54 250
Jul 96	910	31 490	28 780	670	1 900	63 750
Aug 96	840	28 570	28 950	580	500	59 430
Sep 96	860	31 390	27 540	640	540	60 970

Period	SHORT-TERM DEPARTURES			LONG-TERM DEPARTURES		Total Departures
	Permanent Departures	Australian residents	Overseas visitors	Australian residents	Overseas visitors	
DEPARTURES						
Financial Years						
1993-94	3 430	274 770	29 540	7 340	4 140	590 220
1994-95	3 580	292 270	343 610	7 560	4 710	651 730
1995-96	3 890	305 910	366 340	7 680	5 480	689 300
Months						
Jul 95	320	30 370	22 890	590	500	54 670
Aug 95	340	23 320	25 650	650	300	50 280
Sep 95	250	29 110	23 430	520	320	53 640
Oct 95	290	25 910	26 720	460	290	53 750
Nov 95	320	22 200	30 630	500	580	54 230
Dec 95	370	33 040	38 900	650	1 110	74 070
Jan 96	410	19 640	37 530	1 010	380	58 970
Feb 96	320	17 840	35 700	730	440	55 030
Mar 96	350	25 730	32 970	750	400	60 200
Apr 96	330	23 540	33 160	670	330	58 030
May 96	370	25 720	27 520	630	270	54 500
Jun 96	200	29 410	31 240	530	560	61 940
Jul 96	340	32 280	25 420	640	560	59 240
Aug 96	270	27 420	29 840	660	390	58 580
Sep 96	260	34 960	25 200	520	370	61 320

Reference: Unpublished table PMTR0001. Since figures have been rounded to the nearest ten, discrepancies may occur between sums of component items and totals.

Analysis of Table 2.2

2.2 SHORT-TERM OVERSEAS VISITOR ARRIVALS FROM SELECTED COUNTRIES¹

The total of 27,540 short-term overseas arrivals in September 1996 was an increase of 2,920 persons or 12% over September 1995. This figure also represented a drop of 1,410 persons or 5% from August 1996.

Short-term arrivals from the United Kingdom and Ireland rose by 40% on August 1996 and by 30% on September 1995.

Between August and September 1996, arrivals from Indonesia, Japan and Singapore fell by 32%, 13% and 26% respectively. Compared with September 1995, arrivals from Indonesia and Japan increased by 6% and 12% but Singapore fell by 24%.

Period	Country of origin					Total ²
	New Zealand	UK & Ireland	Indonesia	Japan	Singapore	
Financial years						
1993-94	25 150	57 480	27 840	27 530	50 700	297 750
1994-95	24 330	61 070	44 240	28 980	59 600	339 690
1995-96	24 200	59 220	49 260	30 120	64 690	361 180
Months						
Jul 95	2 030	3 010	4 680	2 520	2 900	24 480
Aug 95	2 160	2 660	2 820	3 950	3 780	24 840
Sep 95	2 750	3 750	2 360	2 880	4 670	24 620
Oct 95	2 100	5 780	2 990	2 050	4 010	30 330
Nov 95	1 510	6 680	3 450	1 920	6 660	33 660
Dec 95	2 360	8 370	7 650	2 970	11 040	46 800
Jan 96	1 700	5 760	2 920	2 670	2 400	24 250
Feb 96	1 760	6 440	8 150	3 190	6 460	39 640
Mar 96	2 280	6 010	3 320	2 900	4 760	31 010
Apr 96	2 260	5 990	3 360	2 460	5 760	32 270
May 96	1 630	2 160	2 610	1 320	5 270	22 550
Jun 96	1 660	2 610	4 950	1 290	6 970	26 720
Jul 96	3 000	2 610	5 190	3 430	3 310	28 780
Aug 96	2 100	3 480	3 670	3 720	4 800	28 950
Sep 96	2 430	4 860	2 500	3 220	3 550	27 540

¹ Comprises travellers whose intended or actual stay is less than twelve months.

² Total includes countries not listed in this table.

Reference: Unpublished table PMTR0013

Analysis of Table 2.3

There were 14,360 short-term overseas visitor arrivals for holiday in September 1996; a fall of 2,950 persons or 17% from August 1996 and an increase of 880 persons or 6% on September 1995.

Arrivals from Indonesia for a holiday in Western Australia in September 1996 were the lowest recorded in 15 months.

Short-term arrivals from New Zealand for a holiday in September 1996 were the highest recorded in 15 months.

With a high figure recorded in September 1995, September month would seem to be the most popular month for New Zealanders to travel to Western Australia.

Holidaymakers from the United Kingdom and Ireland increased by 90% in September 1996 from the previous month, repeating the pattern of twelve months ago.

Short-term visitor arrivals from Japan, Malaysia, Singapore and Thailand for a holiday fell between August and September 1996.

2.3 SHORT-TERM OVERSEAS VISITOR ARRIVALS BY AIR FROM SELECTED COUNTRIES: PURPOSE OF JOURNEY: HOLIDAY

Period	Country of origin								Total ¹
	New Zealand	UK & Ireland	Indonesia	Japan	Malaysia	Singapore	Thailand	United States	
Financial years									
1993-94	9 160	22 260	20 850	24 460	19 180	39 370	7 950	2 910	180 850
1994-95	7 720	19 290	33 350	24 640	19 200	45 100	7 180	2 760	193 880
1995-96	6 800	19 010	35 610	23 840	20 800	47 520	8 770	3 250	200 560
Months									
Jul 95	720	1 130	3 000	2 120	590	1 370	450	210	12 260
Aug 95	740	750	1 710	2 820	2 000	2 530	480	40	13 220
Sep 95	1 060	1 300	1 470	2 360	1 080	3 440	390	200	13 480
Oct 95	560	1 940	1 810	1 730	1 690	2 650	1 210	310	15 640
Nov 95	280	2 650	2 460	1 360	2 160	5 070	570	340	18 340
Dec 95	450	2 220	6 640	2 640	1 010	9 240	880	410	28 500
Jan 96	320	2 120	1 740	2 240	510	1 270	430	280	11 620
Feb 96	640	1 990	6 400	2 390	2 840	4 320	460	140	23 030
Mar 96	670	1 930	2 520	2 650	1 490	3 520	870	590	17 510
Apr 96	540	1 660	2 050	1 750	2 410	4 330	1 620	170	17 140
May 96	230	810	1 960	1 000	2 760	4 150	790	320	13 580
Jun 96	580	500	3 850	780	2 240	5 640	610	250	16 240
Jul 96	470	1 140	3 200	2 900	1 440	1 480	590	190	14 280
Aug 96	580	870	2 220	3 300	2 790	3 650	980	100	17 310
Sep 96	1 150	1 650	1 360	2 490	1 670	2 510	550	190	14 360

¹ Total includes countries not listed in this table.

Reference: Unpublished table PMTWAT31 for monthly figures and PMTRO031 for financial year figures.

Analysis of Table 2.4

The total of 34,960 short-term departures of residents for September 1996 was 20% higher than September 1995 and was 27% higher than August 1996.

Departures to the United Kingdom and Ireland in September 1996 rose by 31% from the previous month. This compares to a rise of 28% for the same months a year ago.

Departures to Indonesia in September 1996 were the highest recorded over 15 months and represented a growth of 60% on September 1995.

Short-term departures to Malaysia and Singapore rose by 89% and 27% respectively from August 1996, repeating a similar pattern of twelve months ago.

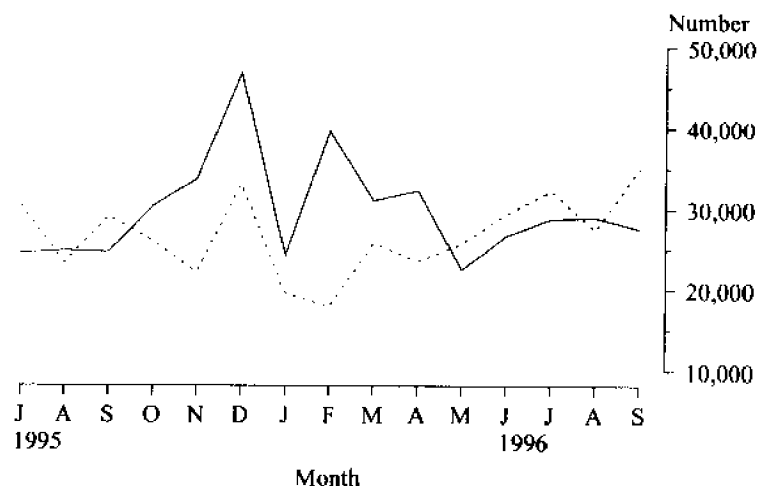
2.4 SHORT-TERM DEPARTURES OF RESIDENTS TO SELECTED DESTINATIONS

Period	Country of destination					Total ¹
	New Zealand	UK & Ireland	Indonesia	Malaysia	Singapore	
Financial years						
1993-94	22 020	38 580	64 720	23 420	24 170	274 770
1994-95	25 750	40 850	68 420	23 070	25 840	292 270
1995-96	25 100	44 070	68 860	22 780	29 430	305 910
Months						
Jul 95	1 940	5 070	8 010	2 190	2 500	30 370
Aug 95	1 600	3 650	5 920	1 440	1 940	23 320
Sep 95	2 480	4 660	5 880	3 190	3 070	29 110
Oct 95	2 160	2 860	7 330	1 870	2 750	25 990
Nov 95	2 000	2 060	4 100	2 020	3 100	22 200
Dec 95	4 100	3 800	5 650	2 820	3 030	33 040
Jan 96	2 140	1 400	4 630	1 480	2 740	19 640
Feb 96	2 290	1 680	3 720	1 040	1 990	17 840
Mar 96	2 500	4 110	6 230	1 740	3 080	25 730
Apr 96	1 820	3 330	5 360	1 460	1 770	23 540
May 96	960	5 650	4 420	1 520	1 360	25 720
Jun 96	1 100	5 770	7 610	2 030	2 090	29 410
Jul 96	1 850	5 830	7 790	2 090	2 400	32 280
Aug 96	1 900	3 760	8 100	1 510	1 950	27 420
Sep 96	2 680	4 920	9 390	2 860	2 470	34 960

¹ Total includes countries not listed in this table.

Reference: Unpublished table PMTR0013.

TOTAL SHORT-TERM ARRIVALS OF OVERSEAS VISITORS AND DEPARTURES OF RESIDENTS BY MONTH



Source: Unpublished table PMTR0013

— Arrivals

- - - - - Departures

Analysis of Table 2.5

Total short-term departures of residents for holidays overseas in September 1996 rose by 4,750 persons or 30% compared to August 1996. The September 1996 total of 20,830 persons represented a rise of 19% on September 1995.

The number of holidaymakers to Indonesia in September 1996 were the highest recorded in 15 months and reflected a large increase of 3,570 people or 75% on September 1995.

Holidaymakers to Malaysia in September 1996 were the second highest number recorded in 15 months. The highest number was recorded in September 1995.

Departures to Singapore and Thailand in September 1996 dropped by 41% and 42% compared to a year ago.

2.5 SHORT-TERM DEPARTURES OF RESIDENTS BY AIR TO SELECTED COUNTRIES: PURPOSE OF JOURNEY: HOLIDAY

Period	Country of Destination							Total ¹
	New Zealand	UK & Ireland	Indonesia	Malaysia	Singapore	Thailand	United States	
Financial years								
1993-94	9 420	15 080	53 670	12 480	12 160	11 690	9 100	150 490
1994-95	11 100	18 430	55 070	11 480	13 220	12 560	9 940	160 730
1995-96	10 120	18 420	53 060	10 430	15 670	12 750	9 650	160 120
Months								
Jul 95	810	2 310	6 760	1 110	1 180	1 800	980	17 540
Aug 95	410	1 670	4 470	410	1 240	1 330	600	12 480
Sep 95	1 500	2 340	4 770	1 880	1 730	2 000	1 420	17 580
Oct 95	960	840	6 390	1 140	1 530	1 000	880	14 520
Nov 95	690	580	3 120	900	2 110	550	340	10 550
Dec 95	1 480	1 320	4 170	1 480	1 320	800	1 260	16 060
Jan 96	890	750	3 250	520	1 140	530	820	9 660
Feb 96	820	380	2 340	440	810	580	370	7 800
Mar 96	1 070	1 580	4 520	580	1 910	820	760	13 000
Apr 96	840	1 540	3 620	610	950	1 400	640	11 960
May 96	350	2 690	3 310	460	630	710	690	12 330
Jun 96	300	2 440	6 330	890	1 110	1 230	930	16 640
Jul 96	960	3 020	6 680	1 040	1 320	1 080	1 720	19 110
Aug 96	700	2 060	6 710	870	860	860	780	16 060
Sep 96	840	2 190	8 340	1 500	1 020	1 150	1 110	20 830

¹ Total includes countries not listed in this table.

Reference: Unpublished table PMTWAT31 for monthly figures and PMTRO031 for financial year figures.

2.6 TOURIST ACCOMMODATION

Period	Hotels, Motels, Guest Houses with facilities			Caravan parks		
	Guest rooms	Room occupancy rates	Guest arrivals	Number of sites	Site occupancy rates	Guest arrivals
	Number	%	'000	Number	%	'000
Financial years						
1993-94 ¹	14 754	57	2 153.8	29202	39	1250
1994-95 ¹	14 754	60	2 219.4	29 554	40	1 231
1995-96 ¹	15 085	60	2 256.1	29 952	40	1 299
Months						
Apr 95		59	182		41	116
May 95		57	173		36	79
Jun 95	14 754	57	166	29 554	40	100
Jul 95		55	178		45	140
Aug 95		61	193		44	138
Sep 95	14 720	68	218	29 828	43	135
Oct 95		63	240		39	112
Nov 95		59	194		35	72
Dec 95	14 924	51	197	30 063	38	105
Jan 96		52	203		45	131
Feb 96		57	179		37	73
Mar 96	14 928	58	198	30 085	37	85
Apr 96		59	187		41	125
May 96		56	171		37	89
Jun 96	15 085	55	167	29 952	40	98

Period	Holiday Flats, Units, Houses			Visitor Hostels		
	Guest Units	Unit occupancy rates	Unit lettings	Bed Spaces	Bed occupancy rates	Bed-nights sold
	Number	%	'000	Number	%	'000
Financial years						
1993-94 ¹	2 224	55	96	3 119	38	418
1994-95 ¹	2 419	57	110	2 834	41	431
1995-96 ¹	2 687	57	134	3 171	43	478
Months						
Apr 95		63	10		48	40
May 95		45	8		41	36
Jun 95	2 419	45	8	2 834	41	35
Jul 95		56	11		43	37
Aug 95		48	9		38	34
Sep 95	2 439	58	12	2 831	41	35
Oct 95		66	13		44	41
Nov 95		55	11		42	38
Dec 95	2 581	61	12	3 033	43	40
Jan 96		73	12		47	46
Feb 96		58	11		44	40
Mar 96	2 414	59	13	2794	45	44
Apr 96		64	12		46	44
May 96		43	10		41	40
Jun 96	2 687	46	10	3171	41	39

¹ Number at 30 June.

Reference: Tourist Accommodation, Western Australia (8635.5)

For more information regarding this table, please contact Pam Prince on (09) 360 5207

Analysis of Table 3.1

The seasonally adjusted unemployment rate increased 0.1 percentage points to 7.7 per cent in November 1996.

The seasonally adjusted number of persons unemployed increased by 800 to 70,400, while the number of persons employed decreased by 900 to 843,800.

Western Australia's seasonally adjusted participation rate for November 1996 decreased by 0.2 percentage points to 66.0 per cent and continues to be the highest of all the states.

3.1 LABOUR FORCE STATUS (AGED 15 YEARS AND OVER): SEASONALLY ADJUSTED SERIES

Month	Employed full-time	Total employed	Total unemployed	Unemployment rate	Participation rate
	'000	'000	'000	%	%
Males					
Jan 96	424.9	476.0	40.9	7.9	76.5
Feb 96	428.5	475.8	42.4	8.2	76.5
Mar 96	426.9	477.9	42.6	8.2	76.7
Apr 96	424.9	477.1	39.3	7.6	76.0
May 96	426.4	478.8	40.9	7.9	76.3
Jun 96	425.4	476.2	43.7	8.4	76.2
Jul 96	432.9	482.5	39.9	7.6	76.4
Aug 96	425.5	481.2	43.1	8.2	76.6
Sep 96	426.3	480.1	41.4	7.9	76.0
Oct 96	431.3	484.5	42.5	8.1	76.7
Nov 96	429.7	480.2	42.2	8.1	75.9
Females					
Jan 96	185.2	346.2	29.7	7.9	55.1
Feb 96	194.3	359.1	29.6	7.6	56.9
Mar 96	194.9	355.1	27.1	7.1	55.8
Apr 96	197.0	346.2	24.2	6.5	54.0
May 96	192.2	356.7	27.8	7.2	56.0
Jun 96	194.6	354.4	30.4	7.9	55.9
Jul 96	196.3	361.9	29.5	7.5	56.7
Aug 96	203.3	369.8	28.3	7.1	57.6
Sep 96	200.9	365.5	27.2	6.9	56.7
Oct 96	193.2	360.2	27.1	7.0	55.8
Nov 96	194.6	363.5	28.2	7.2	56.3
Persons					
Jan 96	610.1	822.2	70.6	7.9	65.7
Feb 96	622.8	834.9	71.9	7.9	66.7
Mar 96	621.8	833.1	69.7	7.7	66.2
Apr 96	621.9	823.3	63.4	7.2	64.9
May 96	618.5	835.4	68.7	7.6	66.1
Jun 96	620.0	830.6	74.2	8.2	66.0
Jul 96	629.3	844.4	69.5	7.6	66.5
Aug 96	628.8	851.1	71.4	7.7	67.0
Sep 96	627.2	845.5	68.6	7.5	66.3
Oct 96	624.5	844.7	69.6	7.6	66.2
Nov 96	624.3	843.8	70.4	7.7	66.0

Reference: The Labour Force, Australia Preliminary (6202.0)

Analysis of Table 3.2

Trend estimates for May 1996 to October 1996 have been revised.

The trend estimate of the unemployment rate decreased to 7.6 per cent.

For more information regarding these tables, please contact Lesley Martin on (09) 360 5320.

3.2 LABOUR FORCE STATUS (AGED 15 YEARS AND OVER): TREND SERIES

Month	Employed full-time '000	Total employed '000	Total unemployed '000	Unemployment rate %	Participation rate %
Males					
Jan 96	426.7	477.1	40.2	7.8	76.5
Feb 96	426.2	476.8	41.0	7.9	76.5
Mar 96	426.1	476.8	41.4	8.0	76.4
Apr 96	426.4	477.3	41.6	8.0	76.3
May 96r	426.7	478.1	41.6	8.0	76.3
Jun 96r	427.1	479.1	41.6	8.0	76.3
Jul 96r	427.6	480.0	41.7	8.0	76.3
Aug 96r	428.2	480.9	41.9	8.0	76.4
Sep 96r	428.7	481.5	42.1	8.0	76.3
Oct 96r	429.2	482.0	42.2	8.1	76.3
Nov 96	429.5	482.2	42.2	8.1	76.2
Females					
Jan 96	189.5	351.5	29.1	7.6	55.8
Feb 96	191.0	351.7	28.3	7.5	55.6
Mar 96	192.7	352.2	27.7	7.3	55.5
Apr 96	194.3	353.4	27.6	7.2	55.6
May 96r	195.8	355.5	27.8	7.2	55.8
Jun 96r	196.9	358.1	28.2	7.3	56.1
Jul 96r	197.5	360.7	28.4	7.3	56.4
Aug 96r	197.9	363.0	28.4	7.3	56.6
Sep 96r	197.9	364.3	28.2	7.2	56.7
Oct 96r	197.4	365.0	27.9	7.1	56.6
Nov 96	196.9	364.7	27.5	7.0	56.4
Persons					
Jan 96	616.1	828.6	69.3	7.7	66.1
Feb 96	617.2	828.5	69.3	7.7	66.0
Mar 96	618.8	829.0	69.1	7.7	65.9
Apr 96	620.7	830.7	69.1	7.7	65.9
May 96r	622.5	833.6	69.4	7.7	66.0
Jun 96r	624.0	837.2	69.7	7.7	66.2
Jul 96r	625.1	840.8	70.1	7.7	66.3
Aug 96r	626.0	843.8	70.4	7.7	66.4
Sep 96r	626.6	845.8	70.3	7.7	66.4
Oct 96r	626.6	847.0	70.2	7.7	66.4
Nov 96	626.5	846.9	69.7	7.6	66.2

Reference: The Labour Force, Australia Preliminary (6202.0)

Analysis of Table 3.3

The total number of employees rose from 550,500 in March 1994 to 558,800 in March 1995. During this twelve month period, the public sector total number of employees rose by 3,600 to 157,600, and the private sector total number of employees showed an increase of 4,800 to 401,300.

3.3 NUMBER OF EMPLOYED WAGE AND SALARY EARNERS BY INDUSTRY AND SECTOR

Particulars	Number of Employees				Gross earnings
	Mar 1994	Sept 1994	Dec 1994	Mar 1995	Mar quarter 1995
	'000	'000	'000	'000	\$m
INDUSTRY					
Mining	20.6	20.7	21.5	23.8	323.5
Manufacturing	58.5	59.7	57.0	56.7	449.9
Electricity, gas and water	8.7	8.4	8.2	8.0	69.1
Construction	28.3	26.0	26.3	28.0	246.6
Wholesale trade	39.9	38.9	38.1	40.0	301.0
Retail trade	78.8	81.8	82.5	80.9	334.9
Transport and storage	22.3	22.2	21.8	21.7	204.5
Communication	8.2	8.5	8.7	8.8	79.4
Finance, property and business	60.8	63.4	66.3	64.2	493.9
Public administration and defence	29.5	29.9	31.7	30.1	226.5
Community services	144.9	149.1	151.1	152.3	970.9
Recreation, personal and other services	48.4	42.3	44.1	42.8	198.9
Total all industries¹	550.5	552.2	558.8	558.8	3 906.2
SECTOR					
Private	396.5	398.9	398.8	401.3	2 692.4
Government					
Commonwealth	22.0	21.5	22.1	22.3	198.6
State	118.7	118.5	125.3	122.7	937.0
Local	13.3	13.3	12.7	12.6	78.3
Total Government	154.0	153.2	160.1	157.6	1 213.8
Total all sectors	550.5	552.2	558.8	558.8	3 906.2

Particulars	FEBRUARY 1994			FEBRUARY 1995		
	Males	Females	Persons	Males	Females	Persons
INDUSTRY						
Mining	18.4	2.9	21.3	20.6	3.4	24.0
Manufacturing	46.2	13.7	59.9	44.0	13.2	57.2
Electricity, gas and water	7.8	0.9	8.8	7.0	1.0	8.0
Construction	22.9	5.6	28.5	23.1	4.1	27.2
Wholesale trade	28.1	11.7	39.8	27.5	12.9	40.4
Retail trade	33.0	44.1	77.1	33.4	46.5	80.0
Transport and storage	17.9	4.4	22.3	16.1	5.6	21.7
Communication	5.8	2.4	8.3	6.0	2.7	8.8
Finance, property and business	28.6	32.7	61.2	29.4	34.3	63.7
Public administration and defence	17.9	11.6	29.5	17.7	12.4	30.1
Community services	49.3	92.6	141.9	43.8	101.2	145.0
Recreation, personal and other services	19.7	26.6	46.3	18.1	24.9	43.0
Total all industries¹	298.9	249.7	548.5	287.9	282.6	550.5
SECTOR						
Private	218.2	175.5	393.8	211.8	187.8	399.6
Government						
Commonwealth	13.8	9.0	22.8	13.1	9.1	22.2
State	56.4	60.2	116.6	55.3	61.0	116.2
Local	8.4	4.8	13.3	7.8	4.7	12.5
Total Government	78.6	74.1	152.7	76.1	74.8	150.9
Total all sectors	298.9	249.7	548.5	287.9	282.6	550.5

¹ Includes employees of government agencies classified to Agriculture, forestry, fishing and hunting.

Reference: Employed Wage and Salary Earners (6248.0)

Analysis of Table 3.4

3.4 AVERAGE WEEKLY EARNINGS OF EMPLOYEES

Over the past twelve months to August 1996, both Western Australian and Australian average weekly total earnings for full-time adult persons increased by 3.7%.

Western Australian average weekly total earnings for full-time adult persons in August 1996 were \$728.70, while the comparable Australian average earnings in August 1996 were \$716.90.

Reference period	MALES		All males	
	Full Time Adults	Ordinary time earnings	Total earnings	Total earnings
	(dollars)			
19 May 95		701.8	764.2	656.6
18 Aug 95		716.8	776.2	677.0
17 Nov 95		730.0	792.2	682.7
16 Feb 96		749.7	806.7	691.8
17 May 96		745.9	805.4	687.3
16 Aug 96		748.5	804.8	691.1

Reference period	FEMALES		All females	
	Full Time Adults	Ordinary time earnings	Total earnings	Total earnings
	(dollars)			
19 May 95		541.8	557.4	403.9
18 Aug 95		555.9	568.7	401.3
17 Nov 95		560.8	574.4	406.5
16 Feb 96		575.1	586.7	414.9
17 May 96		577.3	588.8	410.6
16 Aug 96		582.2	595.0	411.3

Reference period	PERSONS		All employees	
	Full Time Adults	Ordinary time earnings	Total earnings	Total earnings
	(dollars)			
19 May 95		645.8	691.9	539.9
18 Aug 95		660.0	702.9	544.4
17 Nov 95		668.5	713.1	548.4
16 Feb 96		687.6	728.4	560.8
17 May 96		684.8	726.8	552.5
16 Aug 96		688.2	728.7	549.9

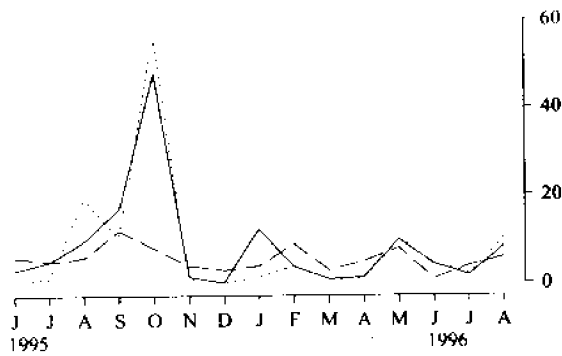
Reference: Average Weekly Earnings, States and Australia, (6302.0)

3.5 INDUSTRIAL DISPUTES CAUSING STOPPAGE OF WORK

Period	Number of disputes	Workers Involved		Total	Working days lost
		Directly	Indirectly		
	Number	'000	'000	'000	'000
Calendar year					
1993	111	27.4	0.2	27.6	29.5
1994	82	15.7	0.2	15.9	27.4
1995	70	99.7	0.0	99.7	101.6
Months					
Jun 95	6	0.8	—	0.8	3.1
Jul 95	5	1.1	—	1.1	5.1
Aug 95	6	19.8	—	19.8	9.7
Sep 95	12	10.4	—	10.4	17.0
Oct 95	8	55.5	—	55.5	47.6
Nov 95	4	1.2	—	1.2	1.6
Dec 95	3	0.4	—	0.4	0.2
Jan 96	4	1.5	—	1.5	12.4
Feb 96	9	4.0	—	4.0	3.9
Mar 96	3	0.9	—	0.9	1.0
Apr 96	5	1.1	—	1.1	1.4
May 96	8	10.0	—	10.0	9.9
Jun 96	1	4.4	—	4.4	4.4
Jul 96	4	2.1	—	2.1	1.8
Aug 96	6	10.2	—	10.2	8.5

Reference: Industrial Disputes, Unpublished ABS Data.

INDUSTRIAL DISPUTES



Source: Unpublished ABS data

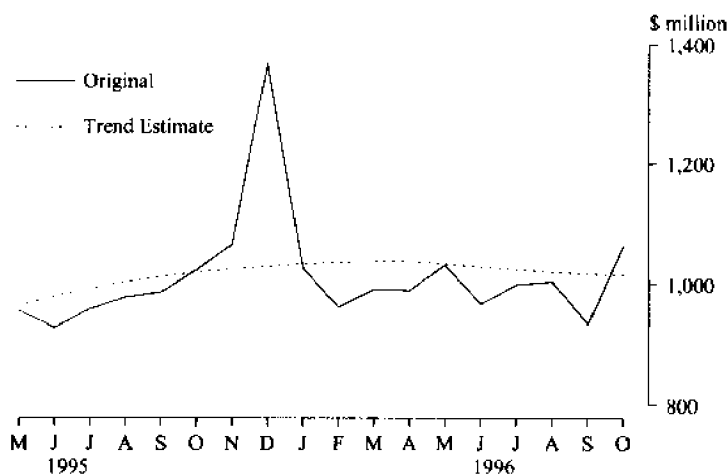
- Working Days Lost ('000)
- ... Workers involved Directly ('000)
- - - Number of Disputes

4.1 MONTHLY RETAIL TURNOVER : ORIGINAL ESTIMATES

Months	Food	Department	Clothing and soft goods	Other Household	Recreational
\$ million					
Oct 95	436.2	93.2	64.3	122.3	54.2
Nov 95	452.7	107.4	66.5	129.8	58.9
Dec 95	509.3	182.2	86.3	163.4	88.6
Jan 96	451.4	83.3	59.3	111.5	55.5
Feb 96	433.9	74.8	49.5	109.8	50.3
Mar 96	445.0	82.5	55.4	101.0	53.0
Apr 96	423.7	91.6	62.5	102.1	55.9
May 96	436.6	99.9	69.6	108.3	57.5
Jun 96	400.6	90.3	67.5	108.0	50.5
Jul 96	420.5	93.6	64.7	127.7	53.4
Aug 96	431.1	94.2	60.7	130.6	52.1
Sep 96	406.6	82.2	55.9	111.5	51.2
Oct 96	455.0	102.4	68.4	138.8	60.1

Months	Totals				
	Other	Hospitality and services	Original	Seasonally adjusted	Trend estimates
\$ million					
Oct 95	79.3	174.7	1 024.2	1 028.5r	1 020.5
Nov 95	80.7	170.4	1 066.4	1 017.0r	1 026.0
Dec 95	123.0	191.2	1 367.4	1 024.7r	1 030.5
Jan 96	84.8	173.7	1 027.0	1 040.1r	1 034.6
Feb 96	79.6	164.2	962.1	1 039.5r	1 037.0
Mar 96	80.5	175.3	992.7	1 040.8r	1 038.8r
Apr 96	89.6	164.6	990.0	1 034.5r	1 037.6r
May 96	98.4	162.3	1 032.6	1 037.7r	1 034.0r
Jun 96	92.6	158.5	968.0	1 026.3r	1 028.9r
Jul 96	88.5	150.6	999.0	1 018.0	1 024.2r
Aug 96	84.0	151.8	1 004.5	1 049.7	1 020.2r
Sep 96	81.0	146.5r	934.9r	969.3r	1 016.9r
Oct 96	94.6	154.3	1 063.6	1 040.5	1 014.7

MONTHLY RETAIL TURNOVER
WESTERN AUSTRALIA



Source: Retail Trade, Australia (8501.0)

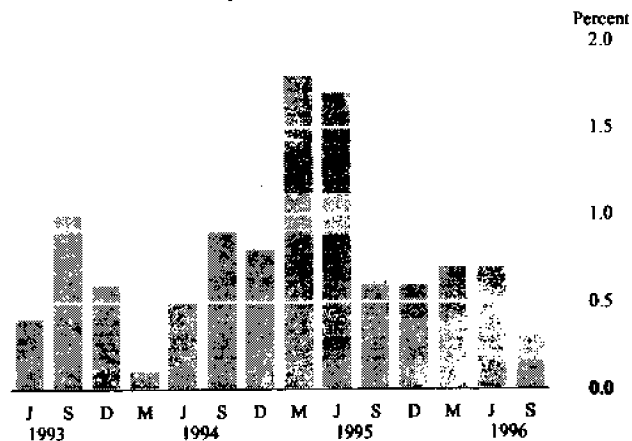
4.2 CONSUMER PRICE INDEX: PERTH

Period	Food	Clothing	Housing	Household equipment and operation	Transportation
(Base of each index: Year 1989-90 = 100.0)					
Financial Years					
1993-94	110.0	108.2	87.3	108.2	114.4
1994-95	113.4	107.4	94.0	109.0	119.0
1995-96	116.8	107.0	100.9	111.2	123.4
Quarters					
Jun 95	115.7	107.5	99.0	110.0	121.4
Sep 95	116.6	106.9	100.0	110.5	123.4
Dec 95	115.8	107.3	100.8	110.9	123.1
Mar 96	116.9	106.8	101.2	111.1	123.2
Jun 96	117.8	107.0	101.6	112.3	123.9
Sep 96	120.3	106.4	101.0	112.7	122.0

Period	Tobacco and alcohol	Health and personal care	Recreation and education	All groups
(Base of each index: Year 1989-90 = 100.0)				
Financial years				
1993-94	128.8	123.8	107.6	108.5
1994-95	136.8	130.4	109.6	112.3
1995-96	145.9	138.6	114.1	116.7
Quarters				
Jun 95	140.2	135.7	112.3	114.9
Sep 95	140.6	135.7	112.1	115.6
Dec 95	145.6	137.2	113.8	116.3
Mar 96	147.5	140.4	115.5	117.1
Jun 96	150.0	141.1	114.8	117.9
Sep 96	151.3	144.1	115.1	118.3

Reference: Consumer Price Index (6401.0)

CPI ALL GROUPS: PERTH
Percentage change from previous quarter



5.1 NEW RESIDENTIAL BUILDING APPROVED

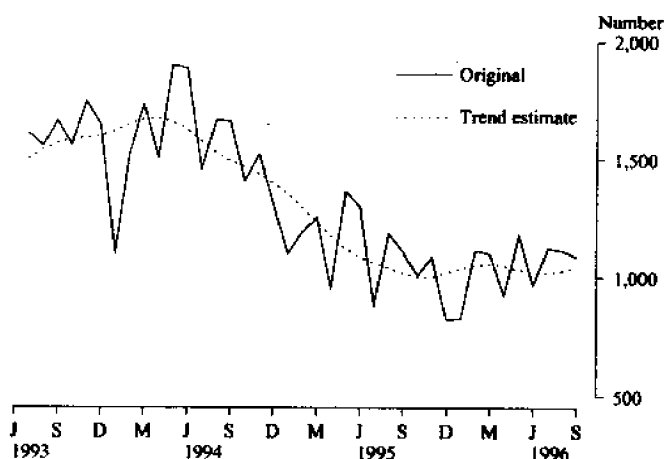
For more information about this table,
call Phil Smythe on (09) 360 5932

Period	Houses		Other Residential Buildings		Total ¹	
	Dwelling Units	Value	Dwelling Units	Value	Dwelling Units	Value
	Number	\$m	Number	\$m	Number	\$m
Financial years						
1993-94	19 437	1 503.7	7 144	461.0	26 776	1 964.7
1994-95	16 207	1 354.3	6 105	420.3	22 427	1 774.6
1995-96	12 211	1 148.3	3 527	272.3	15 853	1 420.7
Months						
Jul 95	883	77.8	316	23.1	1 203	100.9
Aug 95	1 189	104.8	399	30.6	1 596	135.4
Sep 95	1 111	99.2	293	22.9	1 410	122.1
Oct 95	1 008	96.6	253	20.4	1 265	117.0
Nov 95	1 087	99.1	286	22.7	1 378	121.8
Dec 95	819	79.5	168	12.7	995	92.2
Jan 96	827	82.5	410	33.2	1 241	115.7
Feb 96	1 115	105.1	342	25.5	1 482	130.6
Mar 96	1 101	104.5	362	33.7	1 501	138.2
Apr 96	922	90.9	244	17.3	1 169	108.1
May 96	1 183	114.3	227	15.0	1 420	129.2
Jun 96	966	94.0	227	15.3	1 195	109.3
Jul 96	1 124	104.1	136	8.7	1 265	112.8
Aug 96	1 114	108.9	118	9.8	1 239	118.7
Sep 96	1 089	106.9	111	7.8	1 210	114.7

¹ Includes conversions

Reference: Building Approvals, Western Australia (8731.5)

NEW HOUSES APPROVED
WESTERN AUSTRALIA



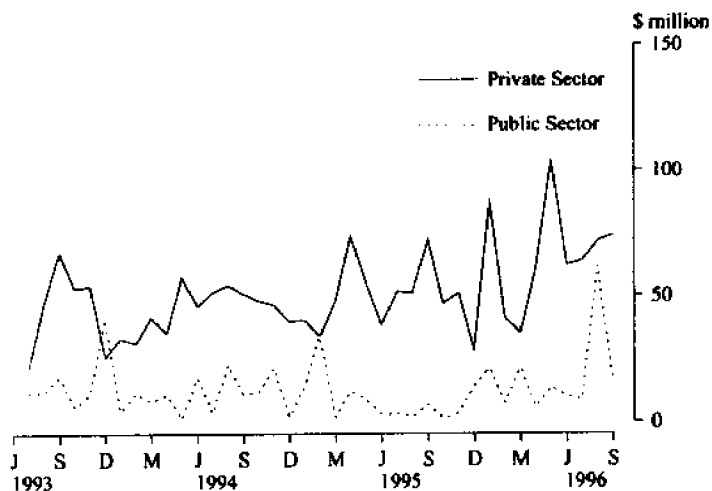
Source: Building Approvals, Western Australia (8731.5)

5.2 NON-RESIDENTIAL BUILDING APPROVED

Period	Private	Public	Total
		(\$ million)	
Financial years			
1993-94	513.1	153.9	667.0
1994-95	580.9	147.3	728.2
1995-96	692.0	111.1	803.1
Months			
Jul 95	51.9	3.2	55.1
Aug 95	51.0	2.2	53.2
Sep 95	72.2	6.8	79.0
Oct 95	47.1	1.4	48.5
Nov 95	51.2	3.4	54.7
Dec 95	28.7	14.2	42.9
Jan 96	86.9	21.3	108.2
Feb 96	41.3	7.3	48.6
Mar 96	35.5	21.4	56.9
Apr 96	60.8	5.7	66.5
May 96	103.4	14.0	117.4
June 96	62.1	10.0	72.1
Jul 96	63.9	8.7	72.6
Aug 96	71.7	61.7	133.4
Sep 96	74.1	17.8	91.9

Reference: Building Approvals, Western Australia (8731.5)

NON-RESIDENTIAL BUILDING APPROVED
WESTERN AUSTRALIA

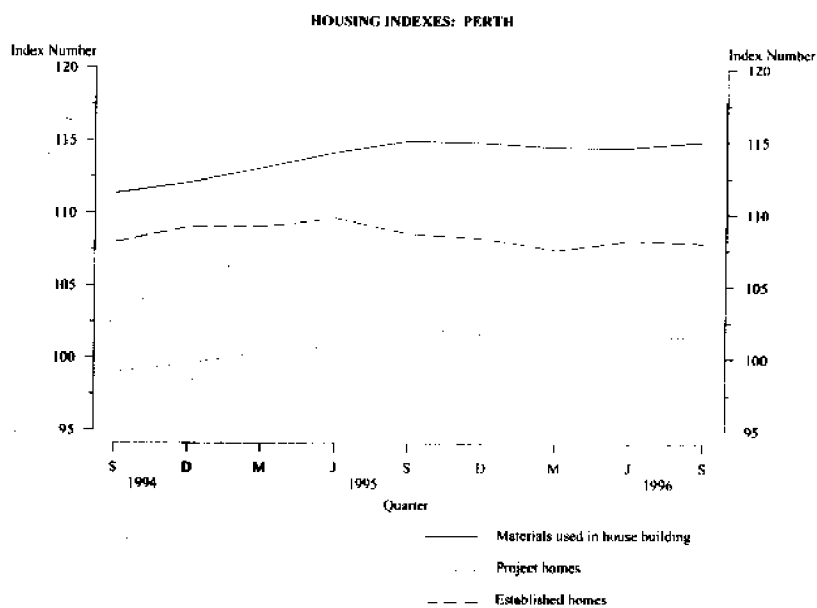


Source: Building Approvals, Western Australia (8731.5)

5.3 SELECTED HOUSING PRICE INDEXES: PERTH

Period	Materials used in house building	Project homes	Established homes
(Base of each index: 1989-90 = 100.0)			
Financial years			
1993-94	109.1	96.2	104.7
1994-95	112.7	100.0	109.0
1995-96	114.7	101.6	108.2
Quarters			
Jun 95	114.2	100.8	109.7
Sep 95	115.0	102.2	108.6
Dec 95	114.9	101.6	108.3
Mar 96	114.6	101.3	107.5
Jun 96	114.6	101.4	108.2
Sep 96	115.0	101.5	108.0

References: Price Index of Materials Used in House Building (6408.0); House Price Indexes, (6416.0)



5.4 PRICE INDEX OF MATERIALS USED IN BUILDING OTHER THAN HOUSE BUILDING: PERTH

Period	All groups	Special Series		
		Electrical materials	Mechanical services	Plumbing materials
(Base of each index 1989-90 = 100)				
Financial Years				
1993-94	107.1	101.9	104.2	105.1
1994-95	110.1	107.3	106.8	114.4
1995-96	113.2	113.0	112.3	120.1
Months				
Aug 95	112.9	113.1	109.8	121.0
Sep 95	112.6	113.2	109.8	119.9
Oct 95	113.1	112.9	111.5	120.7
Nov 95	113.1	112.6	112.1	120.0
Dec 95	113.2	112.6	112.3	119.8
Jan 96	113.3	112.5	112.4	120.0
Feb 96	113.4	112.5	112.9	120.0
Mar 96	113.4	112.8	113.4	119.7
Apr 96	113.5	113.5	114.4	118.9
May 96	113.6	114.0	114.5	120.3
Jun 96	113.5	113.9	114.6	120.4
Jul 96 p	113.9	112.6	114.3	117.3
Aug 96 p	114.0	110.3	114.1	117.4
Sep 96 p	114.2	110.2	113.5	117.9
Oct 96 p	114.3	110.2	113.8	117.0

Reference: Price Index of Materials Used in Building Other Than House Building (6407.0)

Period	Selected Major Building Materials				
	Structural timber	Clay bricks	Ready mixed concrete	Structural steel	Aluminium windows
(Base of each index 1989-90 = 100)					
Financial years					
1993-94	110.6	113.9	116.6	100.4	104.4
1994-95	110.6	118.0	117.8	103.6	112.4
1995-96	109.3	120.7	115.0	107.5	118.1
Months					
Aug 95	109.7	120.2	117.8	106.0	118.2
Sep 95	109.7	120.2	115.0	105.9	118.2
Oct 95	109.6	120.2	115.0	106.9	118.2
Nov 95	109.8	120.2	114.6	107.3	118.2
Dec 95	109.6	120.2	114.4	107.7	118.2
Jan 96	109.2	120.2	114.4	108.2	118.2
Feb 96	109.1	120.2	114.1	108.2	118.2
Mar 96	109.1	120.2	114.1	108.2	118.2
Apr 96	108.6	120.2	114.7	108.2	118.2
May 96	108.6	123.4	114.7	108.8	118.2
Jun 96	108.6	123.4	114.7	108.8	116.4
Jul 96 p	108.6	123.4	119.8	108.8	116.4
Aug 96 p	105.9	123.4	119.5	109.7	116.4
Sep 96 p	105.9	123.6	119.4	111.2	116.4
Oct 96 p	105.7	123.6	119.4	111.2	116.4

Reference: Price Index of Materials Used in Building Other Than House Building (6407.0)

6.1 LIVESTOCK SLAUGHTERED

Period	Cattle		Total	Calves	Sheep	Lambs	Pigs
	Bulls, bullocks, steers	Cows, heifers					
'000							
Financial years							
1993-94	271	168	439	4	2 952	1 553	550
1994-95	244	186	430	4	2 438	1 264	604
1995-96p	233	192	426	3	2 267	1 303	571
Months							
Sep 95	17	18	35	—	162	150	51
Oct 95	21	17	38	—	195	153	49
Nov 95	28	16	44	—	233	127	47
Dec 95	23	17	40	—	196	79	42
Jan 96	19	19	38	-	199	75	40
Feb 96	20	23	43	-	196	89	47
Mar 96	19	18	36	-	194	110	49
Apr 96	17	13	30	-	183	114	47
May 96	17	14	31	-	207	142	51
June 96	16	12	28	-	167	118	45
Jul 96	14	13	27	-	175	145	49
Aug 96	16	15	31	-	200r	121r	44r
Sep 96	18	17	35	1	211r	152	43
Oct 96	21	20	41	-	243	206	40

Reference: Livestock Products (7215.0)

6.2 MEAT PRODUCED

Period	Beef	Veal	Mutton	Lamb	Pigmeat
tonnes					
Financial years					
1993-94	101 513	296	61 731	24 936	32 423
1994-95	97 140	250r	47 776	18 955	37 109
1995-96p	97 059	187	44 737	22 171	35 437
Months					
Sep 95	7 872	16	3 094	2 494	3 144
Oct 95	9 292	16	3 875	2 438	3 013
Nov 95	10 283	17	4 518	2 069	2 888
Dec 95	9 066	17	3 926	1 200	2 524
Jan 96	8 359	16	3 995	1 323	2 497
Feb 96	9 719	14	3 851	1 581	2 909
Mar 96	8 297	11	3 839	1 954	3 009
Apr 96	6 984	11	3 600	2 017	2 907
May 96	7 037	14	4 166	2 445	3 233
Jun 96	6 485	19	3 271	2 078	2 762
Jul 96	5 862	21	3 407	2 448	2 900
Aug 96	6 857	21	3 907r	2 053r	2 924
Sep 96	8 039	27	4 064r	2 584r	2 999
Oct 96	9 448	23	4 779	3 365	2 927

Reference: Livestock Products (7215.0)

For more information regarding these tables, please contact Peter Hodgson on (09) 360 5180.

6.3 WOOL RECEIVALS¹ and LIVE SHEEP EXPORTS

Period	Receivals of taxable wool by brokers and dealers		Export of live sheep		
	bales	tonnes	Number '000	Gross Value \$'000	Gross Weight '000t
Financial years					
1992-93	1 115 307	198 756	3 681.0	89 079	192.5
1993-94	1 196 990	212 670	4 524.0	127 564	238.0
1994-95	972 837	172 575	3 864.8	127 517	193.1
Months					
Sep 95	110 924	19 676	415.7	16 628	19.9
Oct 95	118 670	21 125	342.0	13 360	16.6
Nov 95	87 099	15 520	311.9	11 018	15.8
Dec 95	38 393	6 799r	341.6	13 677	16.5
Jan 96	62 665	11 173	387.8	15 628	20.0
Feb 96	93 367	16 748	359.6	14 112	18.5
Mar 96	92 096	16 422	517.4	19 807	26.4
Apr 96	71 694	12 719	306.4	11 150	15.8
May 96	52 751	9 326	523.2	17 453	26.2
Jun 96	24310r	4284r	236.1	8 320	10.3
Jul 96	53 172	9 484	209.4	7 540	10.3
Aug 96	n.y.a.	n.y.a.	269.7	9 659	12.7
Sep 96	n.y.a.	n.y.a.	441.0	15 995	22.0
Oct 96	n.y.a.	n.y.a.	469.4	16 830	24.4

¹ Source: National Council of Wool Selling Brokers
Reference: FTRACCS Trade Statistics

For more information regarding these tables, please contact Pam Prince on (09) 360 5207

6.4 ENERGY PRODUCTION

Period	Coal ¹	Electricity generated	Gas for distribution ²	Crude oil ^{3,4}	Natural gas ⁴
	'000 tonnes	million kWh	million MJ	mega-litres	million m ³
Financial years					
1993-94	5 151	15 755	172 432	7 639	13 659
1994-95	5 882	16 756	186 658	12 680	15 714
1995-96	5 897	17 422	181 710	9 676	16 766
Months					
Sep 95	567	1 370	14 543	3 421	4 396
Oct 95	496	1 399	15 441		
Nov 95	455	1 394	14 709		
Dec 95	613	1 477	14 416	2 740	4 253
Jan 96	505	1 537	15 635		
Feb 96	445	1 532	15 707		
Mar 96	588	1 514	16 638	3 708	4 136
Apr 96	413	1 366	15 305		
May 96	487	1 475	16 609		
Jun 96	569	1 456	16 614	4 204	4 208
Jul 96	379	1 523	17 292		
Aug 96	414	1 473	17 097		
Sep 96	469	1 379	15 454	n.y.a.	n.y.a.

¹ Source: Department of Minerals and Energy.
² Available for issue through mains.
³ Includes condensate.
⁴ Source: Australian Bureau of Agricultural and Resource Economics.

6.5 MINERAL EXPLORATION: EXPENDITURE BY TYPE OF MINERAL SOUGHT

For more information regarding these tables, please contact Pam Prince on (09) 360 5207.

Period	Metallic Minerals		Non-Metallic Minerals			Total minerals
	Base metals ¹	Gold	Other	Diamonds	Other	
(\$ million)						
Financial years						
1993-94	63.3	310.2	31.5	46.6	2.1	453.7
1994-95	58.8	379.4	17.9	35.2	5.6	495.5
1995-96	89.0	367.8	6.9	33.8	6.0	519.5
Quarters						
Mar 95	17.2	79.5	3.4	5.1	0.6	106.3
June 95	14.1	108.2	4.0	5.8	0.6	135.3
Sep 95	16.6	90.4	4.5	9.7	2.4	124.9
Dec 95	17.5	100.0	4.8	7.4	1.1	128.9
Mar 96	21.8	83.9	n.a.	4.9	2.1	117.8
Jun 96	32.3	93.4	n.a.	11.7	1.6	147.0

¹ Includes copper, lead, zinc, silver, nickel and cobalt.

Reference: Actual and Expected Private Mineral Exploration Expenditure, Australia (8412.0)

6.6 MINERAL PRODUCTION

Period	Iron ore	Bauxite	Gold	Ilmenite	Nickel	Diamonds
	'000 tonnes	'000 tonnes	kg	'000 tonnes	'000 tonnes	'000 carats
Financial years						
1993-94	119 690	27 087	193 599	1 612	62	39 909
1994-95	132 742	26 852	187 280	1 631	94	43 591
1995-96	143 392	28 250	205 830	1 871	105	42 517
Quarters						
Mar 95	32 265	6 657	45 396	388	25	10 111
Jun 95	34 738	6 729	47 000	433	27	9 324
Sep 95	36 459r	7 451	48 765	500	25	9 105
Dec 95	35 213r	7 028	48 675	477	24	12 153
Mar 96	35 890r	6 946	53 100	417	26	11 473
Jun 96	35 830	6 825	55 290	477	30	9 787

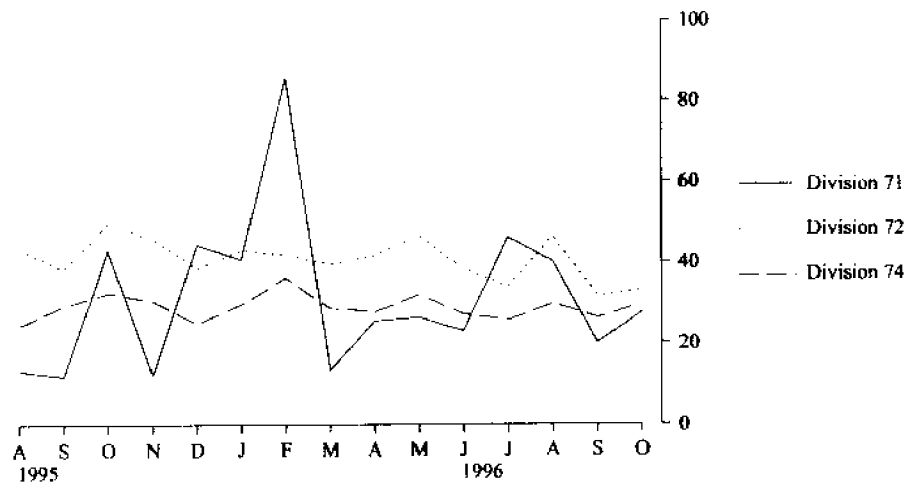
Source: Australian Bureau of Agricultural and Resource Economics

7.1 IMPORTS BY SELECTED DIVISION

Period	33 Petroleum, petroleum products, etc	71 Power generating equipment and machinery	72 Machinery specialised for particular industries	74 General industrial machinery and equipment	78 Road vehicles
(\$ million)					
Financial years					
1993-94	678.4	189.7	432.2	254.0	690.0
1994-95	823.8	203.1	436.9	308.7	802.1
1995-96	768.9	356.1	510.3	345.7	794.5
Months					
Aug 95	76.0	13.3	43.5	24.7	69.8
Sep 95	40.2	12.0	38.5	29.5	59.7
Oct 95	63.1	43.1	49.7	32.8	78.9
Nov 95	51.2	12.3	46.1	30.7	72.9
Dec 95	72.0	44.5	38.7	25.0	60.4
Jan 96	74.7	40.8	43.0	29.8	47.2
Feb 96	72.8	85.5	41.8	36.4	53.8
Mar 96	74.2	13.5	39.6	28.7	60.0
Apr 96	56.4	25.6	41.9	27.8	62.5
May 96	69.9	26.5	46.6	32.2	74.6
Jun 96	47.6	23.0	38.5	27.2	72.1
Jul 96	115.1	46.2	34.0	25.8	70.7
Aug 96	92.7	40.2	46.3	29.8	74.3
Sep 96	39.2	20.0	31.9	26.3	63.0
Oct 96	108.2	27.5	33.0	29.7	81.1

Reference: Fastracs Trade Statistics

IMPORTS BY SELECTED DIVISION



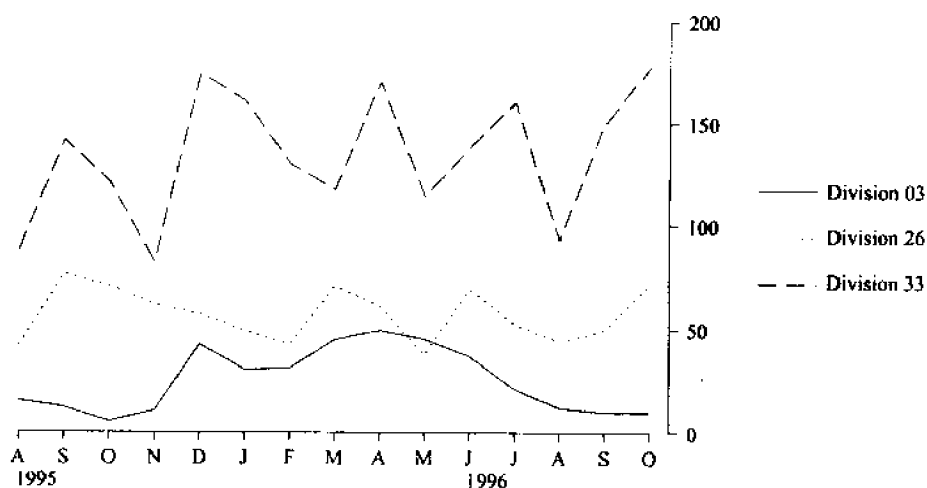
Source: Fastracs Trade Statistics

7.2 EXPORTS BY SELECTED DIVISIONS

Period	03 Fish, crustaceans, molluscs, etc	04 Cereals and cereal preparations	26 Textile fibres and waste (excluding yarn or fabric)	28 Metalliferous ores and metal scrap	33 Petroleum, petroleum products etc.
(\$ million)					
Financial years					
1993-94	413.3	1 150.1	656.1	2 999.4	882.9
1994-95	408.6	1 154.3	733.8	3 094.0	1 544.4
1995-96	364.2	1 874.9	692.6	3 221.8	1 586.0
Months					
Aug 95	15.3	89.5	41.9	320.9	87.9
Sep 95	12.2	114.7	76.2	263.8	141.6
Oct 95	5.6	123.5	70.7	271.0	121.3
Nov 95	10.5	164.9	61.8	269.8	81.9
Dec 95	42.7	209.6	57.2	274.3	174.0
Jan 96	30.4	213.7	49.2	246.0	160.6
Feb 96	31.1	197.6	42.8	233.6	130.3
Mar 96	45.1	185.3	70.8	275.5	117.5
Apr 96	49.6	177.7	61.5	251.6	170.0
May 96	45.5	161.9	37.5	259.7	114.4
Jun 96	37.2	153.5	69.6	314.8	138.2
Jul 96	21.2	121.5	52.4	299.8	160.4
Aug 96	12.0	104.4	44.2	295.8	92.9
Sep 96	10.0	113.1	49.9	289.9	150.0
Oct 96	10.0	120.5	71.6	278.9	177.9

Reference: Fastracs Trade Statistics

EXPORTS BY SELECTED DIVISIONS



Source: Fastracs Trade Statistics

8.1 NEW MOTOR VEHICLE REGISTRATIONS¹

Period	Western Australia					Perth Statistical Division
	Passenger vehicles	Light commercial vehicles	Trucks and buses	Motor cycles and scooters	Total	
Financial years						
1993-94	48 589	10 350	2 136	2 103	63 178	49 074
1994-95	51 947	10 782	2 170	2 344	67 243	52 168
1995-96	51 134	10 838	2 315	2 440	66 727	51 390
Months						
Sep 95	4 021	738	209	187	5 155	4 119
Oct 95	4 111	812	175	201	5 299	4 136
Nov 95	4 595	945	247	365	6 148	4 887
Dec 95	4 308	884	207	209	5 608	4 249
Jan 96	3 178	692	140	174	4 184	3 041
Feb 96	4 516	1 090	158	170	5 934	4 472
Mar 96	4 718	995	174	201	6 088	4 624
Apr 96	4 109	804	145	230	5 288	4 046
May 96	4 889	1 139	204	198	6 430	5 114
Jun 96	4 590	1 199	223	157	6 169	4 662
Jul 96	4 580	895	201	174	5 850	4 590
Aug 96	4 728	839	177	216	5 960	4 756
Sep 96	4 392	748	177	183	5 500	4 442
Oct 96	5 209	874	168	238	6 517	5 142

¹ Excludes plant and equipment, caravans and trailers
Reference: Unpublished statistics

8.2 VEHICLE REGISTRATION STATISTICS¹

Period	Passenger Vehicles		Other Vehicles		Total	
	Original	Trend estimate	Original	Trend estimate	Original	Trend estimate
	Months					
Sep 95	4 021	4 128	947	1 067	4 968	5 195
Oct 95	4 111	4 068	987	1 055	5 098	5 123
Nov 95	4 595	4 063	1 192	1 058	5 787	5 121
Dec 95	4 308	4 120	1 091	1 071	5 399	5 191
Jan 96	3 178	4 212	832	1 087	4 010	5 299
Feb 96	4 516	4 338	1 248	1 101	5 764	5 439
Mar 96	4 718	4 475	1 169	1 116	5 887	5 591
Apr 96	4 109	4 579 r	1 179	1 132 r	5 288	5 711 r
May 96	4 889	4 628 r	1 343	1 143 r	6 430	5 771 r
Jun 96	4 590	4 626 r	1 422	1 147 r	6 012	5 773
Jul 96	4 580	4 603 r	1 096	1 138 r	5 676	5 741
Aug 96	4 728	4 610 r	1 016	1 121 r	5 744	5 731 r
Sep 96	4 392	4 646 r	925	1 099 r	5 317	5 745 r
Oct 96	5 209	4 688	1 070	1 074	6 279	5 762

¹ Other vehicles excludes motor cycles, plant and equipment, caravans and trailers.
Reference: Unpublished statistics

For more information regarding these tables, please contact Cheryl Smith on (09) 360 5242

9.1 PRIVATE NEW CAPITAL EXPENDITURE BY SELECTED INDUSTRY GROUPS (ORIGINAL SERIES)

Period	Selected Industry			Total	Seasonally adjusted
	Mining	Manu- facturing	Other selected industries	Original	
(\$ million)					
Financial Years					
1994-95	4 046	595	2 216	6 857	6 819
1995-96	4 173	978	2 571	7 722	7 729
Quarters					
Mar 95	1 007	133	452	1 592	1 770
Jun 95	1 027	209	487	1 724	1 757
Sep 95	1 041	205	577	1 823	1 877
Dec 95	1 178	176	764	2 119	1 839
Mar 96	894	209	552	1 655	1 848
Jun 96	1 060	387	678	2 125	2 165

Reference: State Estimates of Private New Capital Expenditure (5646.0)

9.2 STATE FINAL DEMAND AND PRODUCTION ACCOUNT TREND DATA AT CURRENT PRICES

Period	Wages salaries and supplements	Gross operating surplus	Indirect taxes less subsidies	GSP (income based)
	(\$ million)			
Quarters				
Dec 93	4 990	4 959	1 185	11 134
Mar 94	5 044	5 046	1 246	11 336
Jun 94	5 073	5 144	1 298	11 515
Sep 94	5 112	5 189	1 328	11 629
Dec 94	5 182	5 188	1 327	11 697
Mar 95	5 288	5 280	1 314	11 882
Jun 95	5 369	5 407	1 329	12 105
Sep 95	5 463	5 563	1 390	12 416
Dec 95	5 580	5 740	1 449	12 769
Mar 96	5 690	5 914	1 475	13 079
Jun 96	5 785	6 076	1 479	13 340

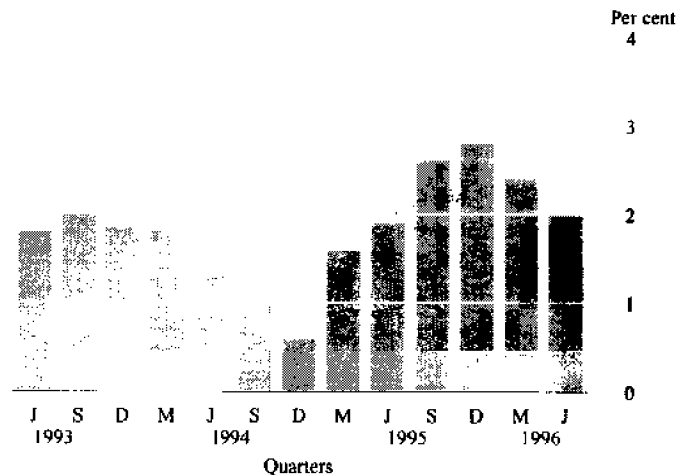
Reference: State Accounts (5242.0)

Analysis of Table 9.2

GSP grew by 2.0% in the June quarter. Growth through the year to June quarter 1996 was 10.2%. Growth in wages, salaries and supplements was slightly lower than in recent quarters, rising by 1.7% in the June quarter. Growth through the year to June quarter 1996 was 7.7%. Gross operating surplus grew by 2.7% in the June quarter, the highest growth rate this quarter for any state. Indirect taxes less subsidies grew by 0.3% in the June quarter, continuing a pattern of falling growth rates evident from December quarter 1995.

For more information about this table, please contact Paul Smith
(09) 360 5127

PERCENTAGE CHANGE IN GSP(A) - TREND
WESTERN AUSTRALIA



(A) Gross State Product at current prices
Source: State Accounts 5242.0

10.1 STATISTICAL SUMMARY

Indicator	Period	Unit	Western Australia				
			Current Australian figure	Current figure	Change from last period(%)	Figure one year ago	Change from one year ago (%)
POPULATION							
Estimated resident population	Jun qtr 96 p	'000	18 289.1	1 762.7	0.4	1 731.2	1.8
Natural increase	Jun qtr 96 p	No.	31 176	3 655	0.1	3 557	2.8
Net estimated migration gain	Jun qtr 96 p	No.	19 330	3 549	-35.3	4 251	-16.5
TOURISM							
<i>Hotels and motels, etc with facilities</i>							
Guest arrivals	Jun qtr 96	'000	7 477	524	-4.4	521.1	0.6
Guest rooms available	Jun qtr 96	No.	172 372	15 085	1	14 754	2.2
Room occupancy rates	Jun qtr 96	%	56	56.5	-5	57.4	-1.6
<i>Overseas visitors</i>							
Long-term Arrivals	Sep 96	No.	5 050	540	8.0	470	14.9
Short-term Arrivals	Sep 96	No.	309 160	27 540	-4.9	24 620	11.9
<i>Resident Departures</i>							
Long-term Departures	Sep 96	No.	4 730	520	-21.2	520	0.0
Short-term Departures	Sep 96	No.	281 520	34 960	27.5	29 110	20.1
EMPLOYMENT							
Employed persons (Trend)	Nov 96	'000	8 383.9	846.9	0.0	829.0	2.2
<i>Unemployed persons</i>							
Looking for work (Original)	Nov 96	'000	737.2	66.3	1.8	64.6	2.6
Looking for work (Trend)	Nov 96	'000	797.2	69.7	-0.7	68.1	2.3
<i>Participation rate</i>							
Original	Nov 96	%	63.2	65.6	-0.2	66.1	-0.8
Trend	Nov 96	%	63.6	66.2	-0.3	66.3	-0.2
<i>Unemployment rate</i>							
Original	Nov 96	%	8.1	7.3	1.4	7.2	1.4
Trend	Nov 96	%	8.7	7.6	-1.3	7.6	0.0
<i>Full-time adult average weekly earnings</i>							
Males	Aug 96	\$	774.40	804.80	-0.1	776.20	3.7
Females	Aug 96	\$	614.20	559.00	1.1	568.70	4.6
Persons	Aug 96	\$	716.90	728.70	0.3	702.90	3.7
All employees total earnings	Aug 96	\$	566.60	549.90	-0.5	544.40	1.0
<i>Average weekly overtime hours</i>							
Per employee	Aug 96	hours	1	1.2	3.4	1.3	-8.2
Per employee working overtime	Aug 96	hours	6.8	8.4	6.6	8	5.8
Employees working overtime	Aug 96	%	14.9	14	-3	16.1	-13.2
<i>Industrial disputes in progress (working days lost)</i>							
Total	Aug 96	'000	119.2	8.5	372.2	9.7	-12.4
Per '000 employees year ended	Aug 96	days	139.0	160.0	-1.2	66.0	142.4
RETAIL							
<i>Monthly Retail Turnover</i>							
Original	Sep 96	\$m	9 628	939.8	-6.9	987.5	-4.8
Trend estimate	Sep 96	\$m	10 261.3	1 007.3	-0.8	1 013.5	-0.6
Consumer Price Index	Jun qtr 96	Index No.	119.8	117.9	0.7	114.9	2.6

10.1 STATISTICAL SUMMARY continued

Indicator	Period	Unit	Current Australian figure	Western Australia		Change from one year ago (%)
				Current figure	Change from last period (%)	
CONSTRUCTION						
<i>Building Approvals</i>						
Dwelling Units	Sep 96	No.	10 016	1 210	-2.3	1 410 -18.2
Value of all building	Sep 96	\$m	2 328.1	219.2	-18.2	217.4 0.8
<i>Building Commencements</i>						
Dwelling Units	Jun qtr 96	No.	30 996	3 778	10.2	4 623 -18.3
Value of all building	Jun qtr 96	\$m	6 413.7	626.3	6.8	658.5 -4.9
<i>Total Building</i>						
Value of work done during	Jun qtr 96	\$m	6 256.5	619.3	5.8	671.9 -7.8
Value of work yet to be done	Jun qtr 96	\$m	9 177.1	605.5	12	642.4 -5.7
<i>Engineering Construction</i>						
Value of work commenced	Jun qtr 96	\$m	3 072.4	794.7	20.9	489.7 62.6
Value of work done during	Jun qtr 96	\$m	4 114.7	856.2	46.5	477.8 79.1
Value of work yet to be done	Jun qtr 96	\$m	5 704.3	1 353.4	1.3	1 052.6 28.6
<i>Housing Price Indexes</i>						
Materials used in house building	Jun qtr 96	Index No.	115.5	114.6	0	114.2 0.4
Established houses	Jun qtr 96	Index No.	113.6	108.2	0.7	109.7 -1.4
Project Homes	Jun qtr 96	Index No.	109.6	101.4	0.1	100.8 0.6
MINERAL EXPLORATION						
Gold	Jun qtr 96	\$m	147.4	93.4	11.3	106.2 -11.4
Other minerals	Jun qtr 96	\$m	137.5	53.6	58.1	27.1 97.8
OVERSEAS TRADE						
Imports	Oct 96	\$m	7 284.3	588.6	44.8	732.0 -19.6
Exports	Oct 96	\$m	6 393.2	1 690.6	17.5	1 577.8 7.1
TRANSPORT						
<i>Passenger vehicle registrations</i>						
Original	Sep 96	No.	42 946	4 392	-7.1	4 021 9.2
Trend	Sep 96	No.	45 265	4 543	-0.4	4 128 10
<i>Total registrations</i>						
Original	Sep 96	No.	51 089	5 317	-7.4	4 968 7
Trend	Sep 96	No.	54 229	5 682	-0.3	5 195 9.4
FINANCE						
<i>Private New Capital Expenditure</i>						
Original	Jun qtr 96	\$m	11 129	2 125	28.4	1 724 23.3
Seasonally adjusted	Jun qtr 96	\$m	10 682	2 165	17.2	1 757 23.2
<i>Gross State Product (Income based)</i>						
Current prices	Jun qtr 96	\$m	122 332	12 573	0.3	11 603 8.4
State Final Demand at average 1989-90 prices	Jun qtr 96	\$m	109 714	11 419	6.0	10 642 7.3

For more information...

The ABS publishes a wide range of information on Australia's economic and social conditions. Details of what is available in various publications and other products can be found in the *ABS Catalogue of Publications and Products* which is available from any of our Offices (see below for contact details).

ABS Products and Services

Many standard products are available from ABS Bookshops located in each State and Territory. In addition to these products, information tailored to special needs of clients or in-depth data investigations can be obtained on a wide range of media by contacting the ABS Information Consultancy Services in your nearest ABS office.

National Dial-a-Statistic Line

0055 86 400

(Steadycorn P/L premium rate 25c/21.4 secs.)

This number gives 24 hours access, 365 days a year for a range of important economic statistics, including the CPI.

Internet

<http://www.abs.gov.au>

A wide range of ABS information is available via the Internet, with basic statistics available for each State, Territory and Australia. We also have Key National Indicators, ABS product release details and other information of general interest.

Bookshops and Subscriptions

There are now over 500 titles available from the ABS Bookshops in each of our Offices. The ABS also provides a subscription mailing service through which nominated publications are provided by mail at no additional cost. (Telephone Publications Subscription Service toll free on 008 02 0608 Australia wide).

Sales and Inquiries

Regional Offices	Information Enquiries	Bookshop Sales
SYDNEY	(02) 9268 4611	9268 4620
MELBOURNE	(03) 9615 7000	9615 7829
BRISBANE	(07) 3222 6531	3222 6350
PERTH	(09) 360 5140	360 5307
ADELAIDE	(08) 237 7100	237 7582
HOBART	(002) 20 5800	20 5800
CANBERRA	(06) 207 0326	207 0326
DARWIN	(08) 8943 2111	8943 2111
National Office		
ACT	(06)252 6007	008 020 608



**Information Services,
Exchange Plaza,
Sherwood Court,
Perth WA 6000.
or any ABS Office**

© Commonwealth of Australia 1996

Recommended retail price: \$15.00



2130550012968
ISSN 0727-2367